

# INSTRUMENT APPROACH CHART

**AERODROME ELEV. 1268ft.**  
HEIGHTS RELATED TO:  
THR RWY27-ELEV 1248ft

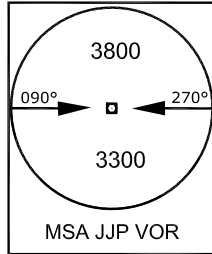
**TWR 124.3**  
**APP 125.25**

**JAIPUR (VIJP)**  
INDIA  
ILS (Z) RWY 27

75°30' E      75°40'      75°50'      76°00'

BEARINGS ARE MAGNETIC  
ALTITUDES, ELEVATIONS AND HEIGHTS IN FEET  
VAR 0° 23' E 2010.

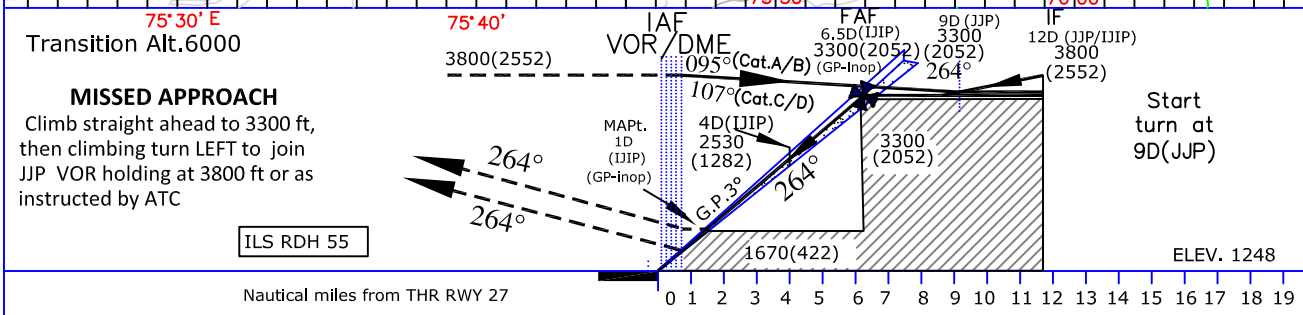
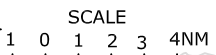
**DME REQUIRED**



**NOTE 2:**  
DVOR Coverage is restricted BTN region 340°-000°-020° from 12NM to 25NM below 5000ft AMSL due terrain.

**NOTE 1:**  
ATC may clear within aerodrome control zone an aircraft established on any radial other than the promulgated radials to join 12D JJP arc procedure at or above 3800 ft

**GP In-Operative procedure**  
FAF 6.5D(IJIP)  
Altitude at FAF 3300ft  
Descent Gradient 5.24% (3°)  
MAPt. 1D (IJIP)



CATEGORY OF AIRCRAFT	OCA(H)		Distance(IJIP) / Altitude information (G.P. In-op)								
	A/B	C/D	Distance(NM)	6.5D	6D	5D	4D	3D	2D		
STRAIGHT-IN	1448(200)	1448(200)	Distance(NM)	6.5D	6D	5D	4D	3D	2D		
VISUAL CIRCLING	2230(962)	2710(1442)	Altitude (ft.)	3300	3160	2840	2530	2210	1890		
GP In-Operative procedure			Time & Rate of Descent /Ground speed information								
STRAIGHT-IN	1670(422)	1670(422)	Ground speed (kt.)			80	100	120	140	160	180
VISUAL CIRCLING	2230(962)	2710(1442)	Rate of descent (ft/min)			425	530	635	745	850	955

DRG. NO. AAI/ -IALC/9/31-12-2020